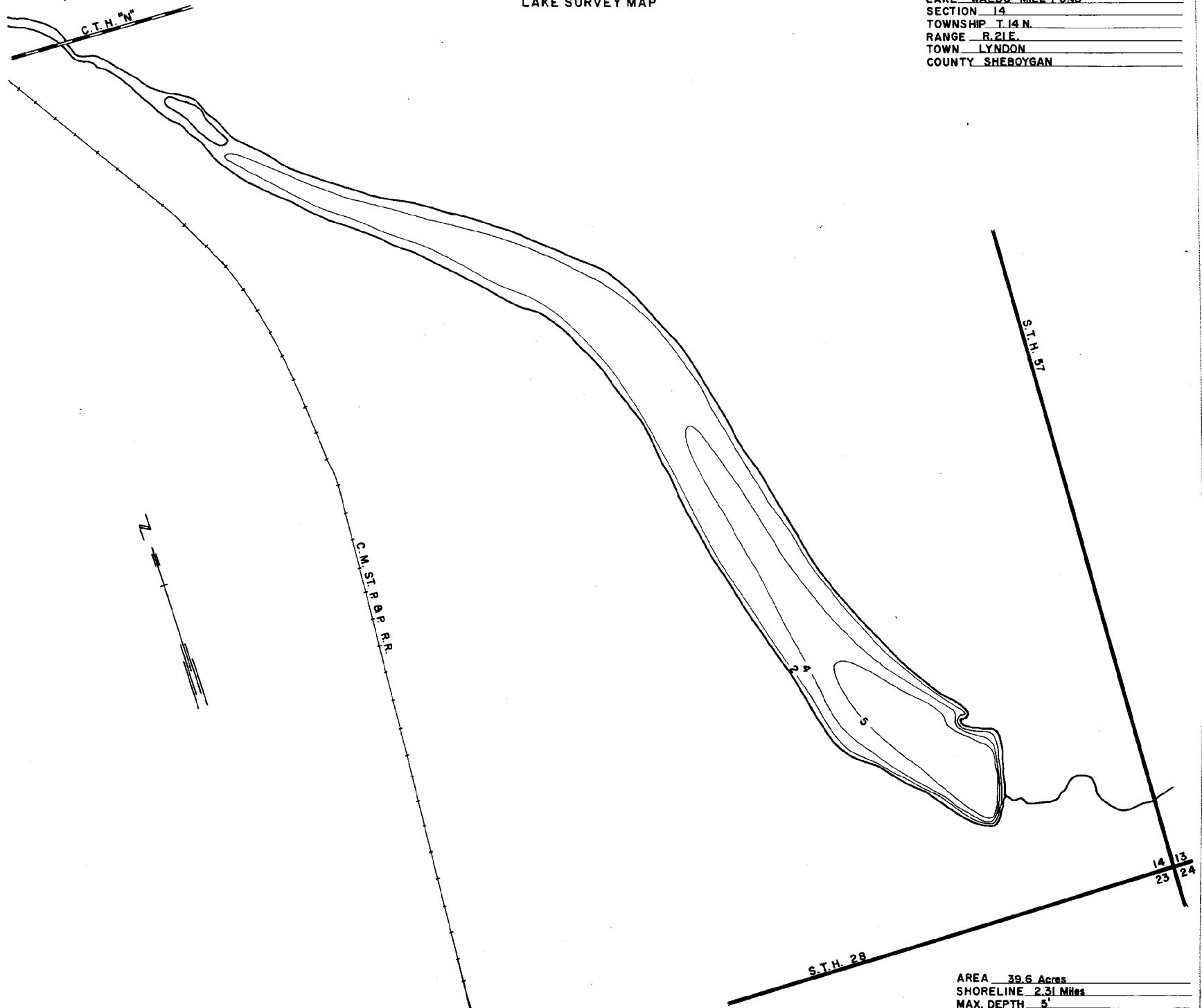


WISCONSIN CONSERVATION DEPARTMENT

LAKE SURVEY MAP

LAKE WALDO MILL POND
SECTION 14
TOWNSHIP T. 14 N.
RANGE R. 21 E.
TOWN LYNDON
COUNTY SHEBOYGAN



AREA 39.6 Acres
SHORELINE 2.31 Miles
MAX. DEPTH 5'