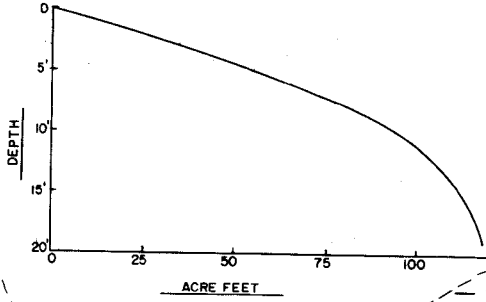
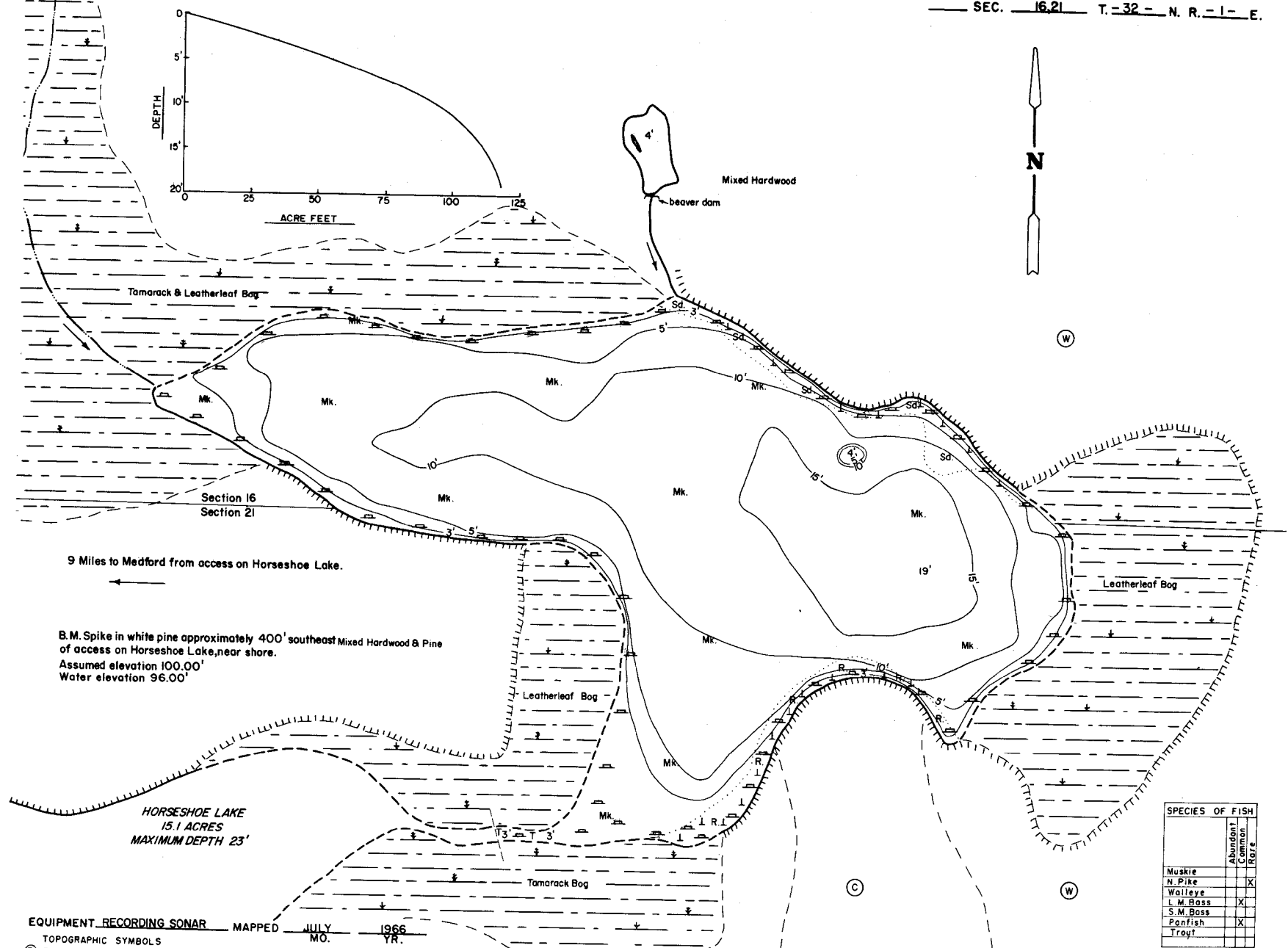


WISCONSIN CONSERVATION DEPARTMENT

LAKE SURVEY MAP

CLARKE LAKE TAYLOR COUNTY  
 SEC. 16, 21 T. 32 - N. R. - 1 - E.



9 Miles to Medford from access on Horseshoe Lake.

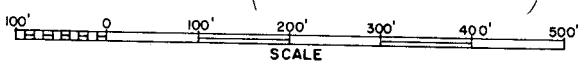
B.M. Spike in white pine approximately 400' southeast Mixed Hardwood & Pine of access on Horseshoe Lake, near shore.  
 Assumed elevation 100.00'  
 Water elevation 96.00'

HORSESHOE LAKE  
 15.1 ACRES  
 MAXIMUM DEPTH 23'

EQUIPMENT RECORDING SONAR MAPPED JULY 1966

- TOPOGRAPHIC SYMBOLS
- (B) Brush
  - (PW) Partially wooded
  - (W) Wooded
  - (C) Cleared
  - (P) Pastured
  - (A) Agricultural
  - B.M. Bench Mark
  - Dwelling
  - Dam

- LAKE BOTTOM SYMBOLS
- P. Peat
  - Mk. Muck
  - C. Clay
  - M. Marl
  - Sd. Sand
  - Gr. Gravel
  - R. Rubble
  - Br. Bedrock
  - T Submergent vegetation
  - Emergent vegetation
  - Stumps & Snags



Access Access with Parking Boat Livery

SPECIES OF FISH		Abundant	Common	Rare
Muskie				X
N. Pike				X
Walleye				X
L.M. Bass		X		
S.M. Bass				X
Panfish		X		
Trotl.				X

AREA 12.3 ACRES  
 UNDER 3FT. 12.3 %  
 OVER 20FT. 0 %  
 VOLUME 113.5 ACRE FT.  
 TOTAL ALK. 14 P.P.M.  
 SHORELINE 0.8 MILES