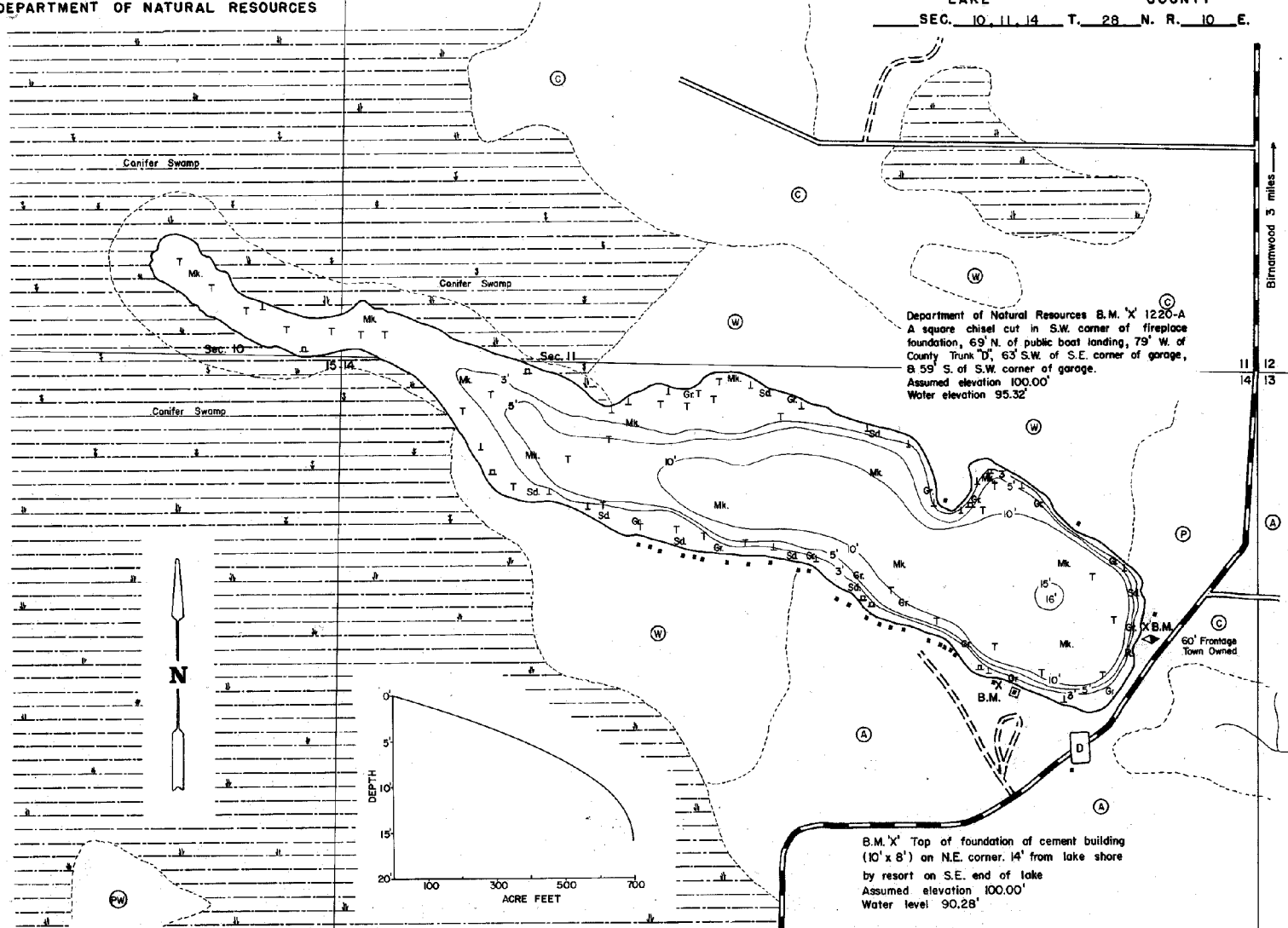


STATE OF WISCONSIN  
DEPARTMENT OF NATURAL RESOURCES

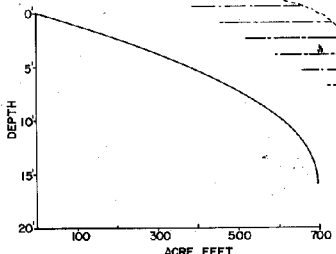
LAKE SURVEY MAP

MAYFLOWER LAKE MARATHON COUNTY  
SEC. 10, 11, 14 T. 28 N. R. 10 E.



Department of Natural Resources B.M. X 1220-A  
A square chisel cut in S.W. corner of fireplace foundation, 69' N. of public boat landing, 79' W. of County "Trunk D", 63' S.W. of S.E. corner of garage, 8 59' S. of S.W. corner of garage.  
Assumed elevation 100.00'  
Water elevation 95.32'

B.M. X' Top of foundation of cement building (10' x 8') on N.E. corner, 14' from lake shore by resort on S.E. end of lake  
Assumed elevation 100.00'  
Water level 90.28'

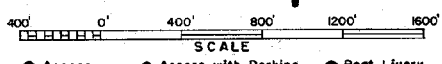


EQUIPMENT RECORDING SONAR MAPPED

AUG. 1987  
MONTH YEAR  
LAKE BOTTOM SYMBOLS

- TOPOGRAPHIC SYMBOLS**
- (B) Brush
  - (FW) Partially wooded
  - (W) Wooded
  - (C) Cleared
  - (P) Pastured
  - (A) Agricultural
  - B.M. Bench Mark
  - Dwelling
  - Resort
  - Camp

- LAKE BOTTOM SYMBOLS**
- P. Peat
  - Mk. Muck
  - C. Clay
  - M. Marl
  - Sd. Sand
  - St. Silt
  - Gr. Gravel
  - R. Rubble
  - Bc Bedrock
  - B Boulders
  - S Stumps & Snags
  - Rock danger to navigation
  - T Submergent vegetation
  - I Emergent vegetation
  - F Floating vegetation
  - Brush shelters



Access Access with Parking Boat Livery  
Drawn by: C. Holt  
Field work by: P. Michelson, J. Smith.

SPECIES OF FISH	ABUNDANCE		
	Abundant	Common	Present
Muskie			
N. Pike			
Walleye	X		
L. N. Bass	X		
S. N. Bass	X		
Panfish	X		
Trot			

WATER AREA 98.3 ACRES  
 UNDER 3 FT. 34.7 %  
 OVER 20 FT. 0 %  
 MAX. DEPTH 16 FEET.  
 TOTAL ALK. 100 P.P.M.  
 VOLUME 693.5 ACRE FT.  
 SHORELINE 2.7 MILES

Maps are not for navigation  
 Source-Wisconsin Department of Natural Resources  
 Hunt Fish Camp Wisconsin .Com 2005