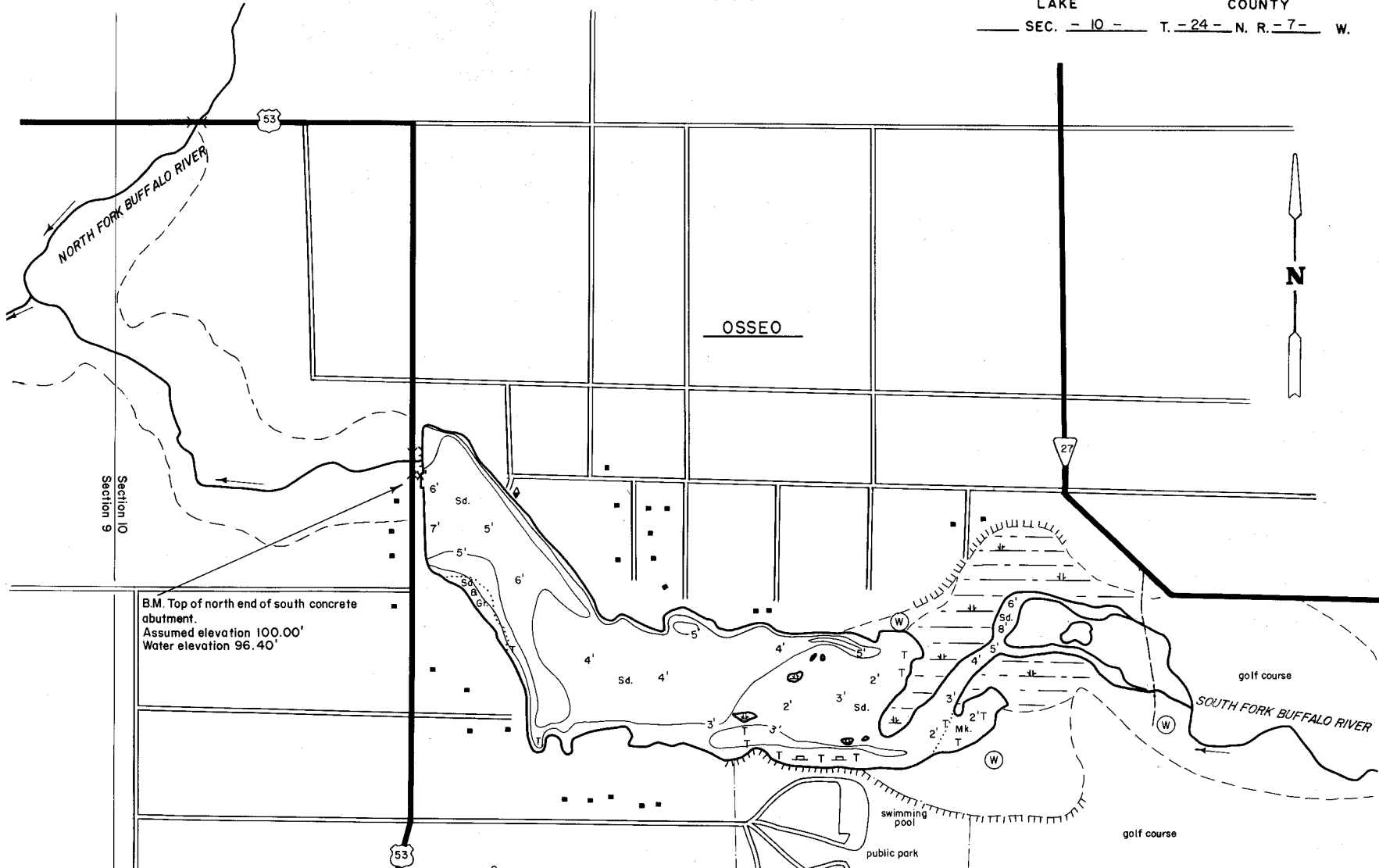


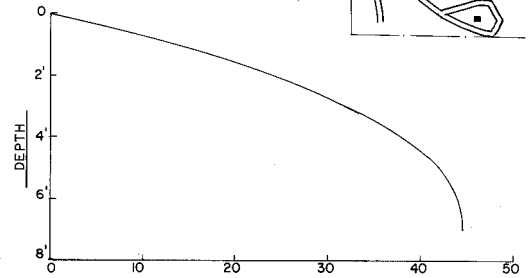
WISCONSIN CONSERVATION DEPARTMENT

LAKE SURVEY MAP

MARTHA LAKE
TREMPEALEAU COUNTY
SEC. - 10 - T. - 24 - N. R. - 7 - W.



B.M. Top of north end of south concrete abutment.
Assumed elevation 100.00'
Water elevation 96.40'



EQUIPMENT RANGE POLE MAPPED MAY 1967
MO. YR.

WATER ELEV. 96.40'

- TOPOGRAPHIC SYMBOLS**
- (B) Brush
 - (PW) Partially wooded
 - (W) Wooded
 - (C) Cleared
 - (P) Pastured
 - (A) Agricultural
 - B.M. Bench Mark
 - ||||| Steep slope
 - - - Indefinite shoreline
 - Marsh
 - Spring
 - Intermittent stream
 - Permanent inlet
 - Permanent outlet
- LAKE BOTTOM SYMBOLS**
- P. Peat
 - Mk. Muck
 - C. Clay
 - M. Marl
 - Gr. Gravel
 - R. Rubble
 - Br. Bedrock
 - T. Submergent vegetation
 - Stumps & Snags

SPECIES OF FISH		
	Abundant	Rare
Muskie		
N. Pike		
Whitey		
L.M. Bass	X	
S.M. Bass		
Panfish	X	
Trout	X	

13.5 ACRES WITH ISLANDS
AREA 13.4 ACRES
UNDER 3 FT. 39.4 %
OVER 20 FT. 0.0 %
VOLUME 44.7 ACRE FT.
TOTAL ALK. 20 P.P.M.
SHORELINE 1.4 MILES