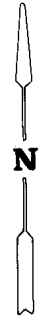


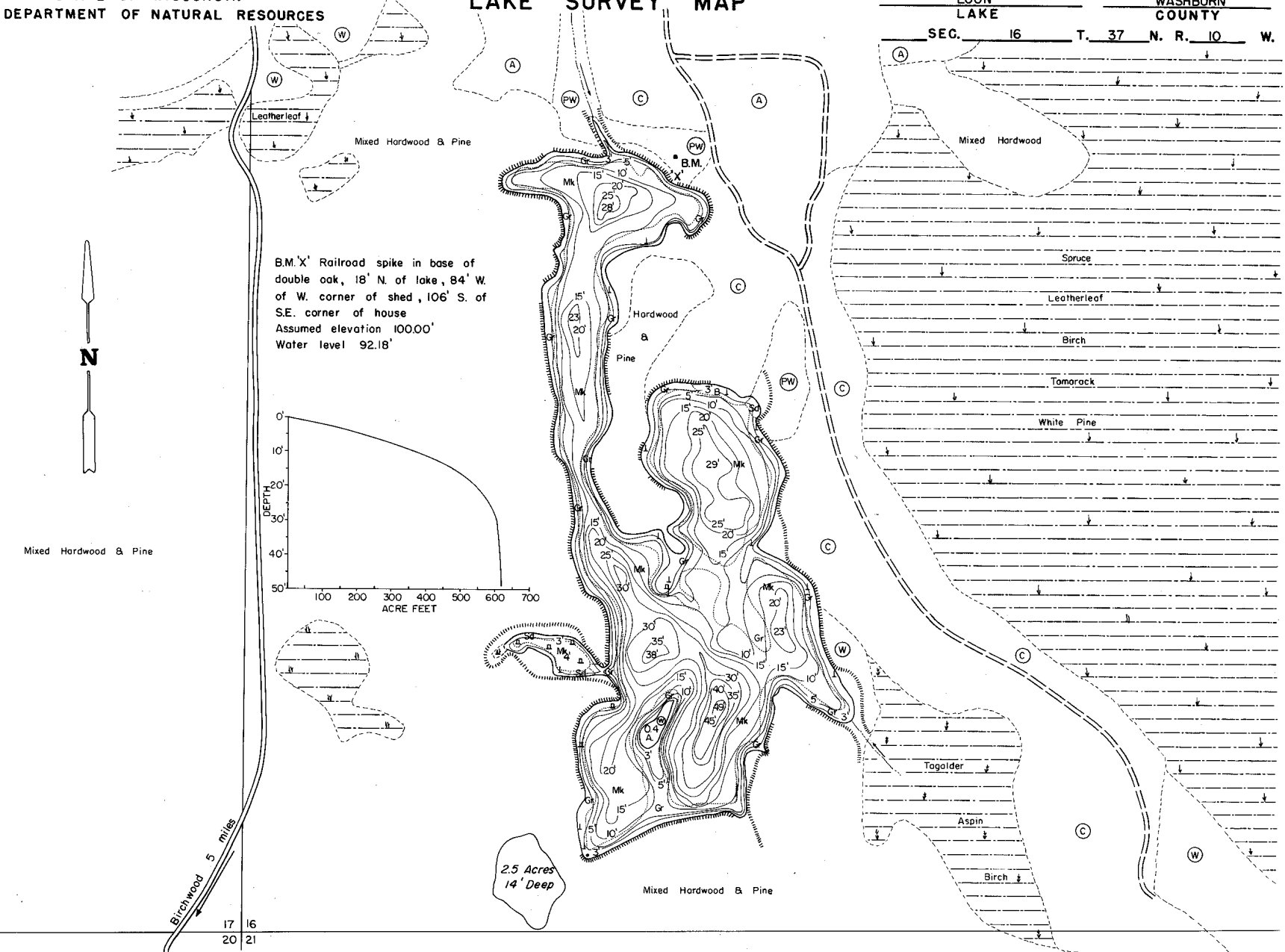
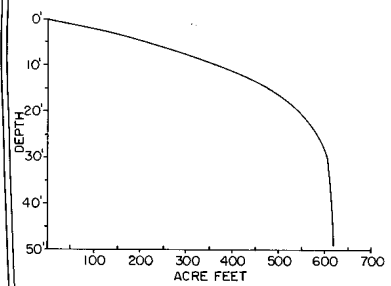
STATE OF WISCONSIN
DEPARTMENT OF NATURAL RESOURCES

LAKE SURVEY MAP

LOON LAKE
WASHBURN COUNTY
SEC. 16 T. 37 N. R. 10 W.



B.M.'X' Railroad spike in base of double oak, 18' N. of lake, 84' W. of W. corner of shed, 106' S. of S.E. corner of house
Assumed elevation 100.00'
Water level 92.18'



2.5 Acres
14' Deep

EQUIPMENT RECORDING SONAR MAPPED AUG 1971

- | TOPOGRAPHIC SYMBOLS | | LAKE BOTTOM SYMBOLS | |
|-----------------------|------------------------|---------------------|-----------------------------|
| (B) Brush | Steep slope | P. Peat | B Boulders |
| (PW) Partially wooded | ~ Indefinite shoreline | Mk. Muck | ⊕ Stumps & Snags |
| (W) Wooded | ~ Marsh | C. Clay | ⊙ Rock danger to navigation |
| (C) Cleared | ~ Spring | M. Marl | T Submergent vegetation |
| (P) Pastured | ~ Intermittent stream | Sd. Sand | ⊥ Emergent vegetation |
| (A) Agricultural | ~ Permanent inlet | St. Silt | ~ Floating vegetation |
| B.M. Bench Mark | ~ Permanent outlet | Gr. Gravel | ⊕ Brush shelters |
| ■ Dwelling | ~ Dam | R. Rubble | |



◆ Access ◀ Access with Parking ▶ Boat Livery
Drawn by: C. Holt

SPECIES OF FISH	ABUNDANCE		
	Abundant	Common	Present
Muskie			
N. Pike			
Walleye			
L. M. Bass	X		
S. M. Bass			
Panfish		X	

WATER AREA 45.7 ACRES
UNDER 3 FT. 10 %
OVER 20 FT. 23 %
MAX. DEPTH 49 FEET.
TOTAL ALK. 16 P.P.M.
VOLUME 619 ACRE FT.
SHORELINE 2.47 MILES